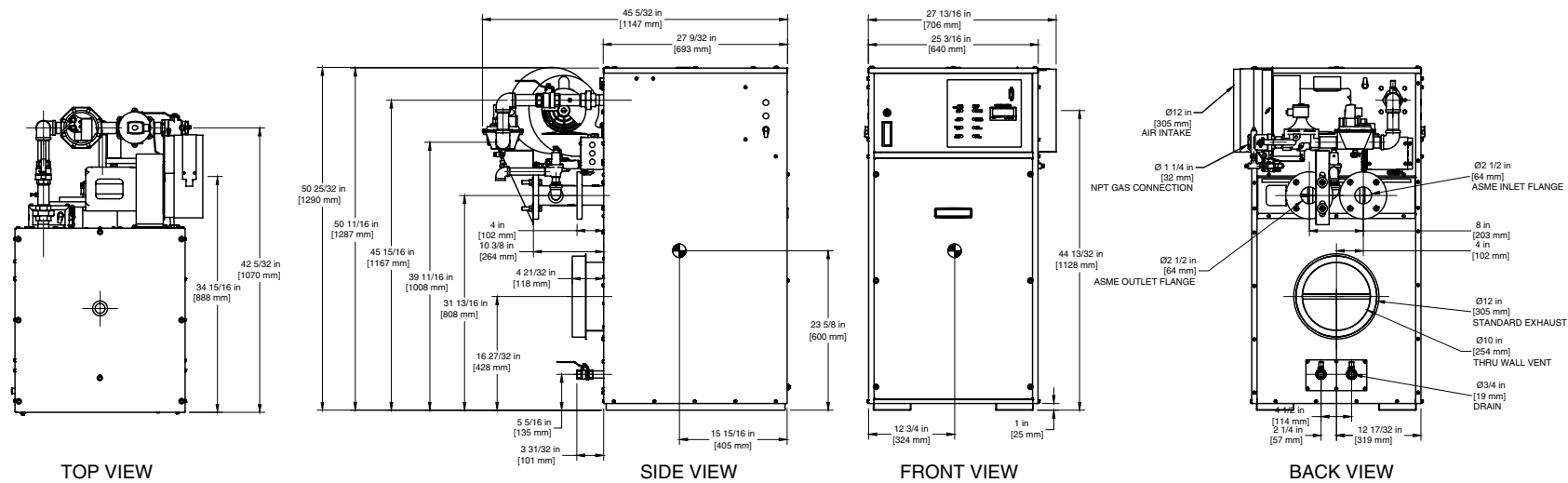


INDOOR UNIT

RSUB-67 REV D



- Notes:
- 1. Dimensions are approximate and should not be used to "rough-in" equipment.
  - 2. Dimensions are subject to change without notice.

BOILER CERTIFIED RATINGS & CAPACITIES

Fuel Type	Natural/Propane Gas	Boiler FLA	9.9*
Input BTU/hr.	1,250,000 / 366 kW	Min. Gas Pressure Required	5"W.C.**
Output BTU/hr.	1,062,500 / 311 kW	Max. Gas Pressure Allowed	14"W.C.
Electrical Requirements	120 VAC / 1 ph / 60 hz	Operating Weight	673 lbs. / 306 kg.

BOILER TEMPERATURE RISE / PRESSURE DROP

20°F / 11.1°C				25°F / 13.9°C				30°F / 16.7°C				35°F / 19.4°C			
Flow Rate		Pressure Drop		Flow Rate		Pressure Drop		Flow Rate		Pressure Drop		Flow Rate		Pressure Drop	
GPM	L/s	Ft	kPa	GPM	L/s	Ft	kPa	GPM	L/s	Ft	kPa	GPM	L/s	Ft	kPa
106.3	6.7	2.11	6.2	85.0	5.4	1.40	4.1	70.8	4.5	1.00	2.9	60.7	3.8	0.70	2.2

BOILER / WATER HEATER TRIM & CONTROLS

Main Gas Valve	V4944B	Pilot Regulator	White-Rodgers 25M
Firing Valve	1 1/4"	Main Ball Valve	1 1/4"
Safety Valve	ASCO L8214G 1 1/4"	Air Switch	HUBA
Ignition Control	Honeywell RM7897C	Blower Motor	Fasco 1/2 hp - FLA 8.2
Operating Control (FB/FW)	Jumo	Relief Valve - FB	3/4" x 1" set @ 50 psi
High Limit	Honeywell L4008E	Relief Valve - FW	3/4" x 3/4" set @ 125 psi
		Flow Switch	TACO

A.S.M.E.

ASME Sect IV Htg Surface	133.76 Sq. Ft. / 12.43 Sq. M.	Design Data	Max. 160 psig & 250°F
Water Volume	4.7 gal / 17.8 Liters		

- \* Add circulator amps.  
\*\* For incoming gas pressures lower than 5" W.C. natural or 11" W.C. propane, consult factory.

WATER HEATER HOURLY RECOVERY CAPACITY (GPH & LPH)

40°F	22°C	60°F	33°C	80°F	44°C	100°F	56°C	120°F	67°C	140°F	78°C
3121	11798	2081	7866	1561	5899	1248	4719	1040	3933	892	3371

Boilers & Water Heaters not available for sale in Canada due to NRCan regulations.

REP FIRM \_\_\_\_\_

SUBMITTED BY \_\_\_\_\_

JOB NAME \_\_\_\_\_

ARCHITECT \_\_\_\_\_

ENGINEER \_\_\_\_\_

CONTRACTOR \_\_\_\_\_

DATE \_\_\_\_\_

## FUTERA II 1250

Category I or Category III Appliance

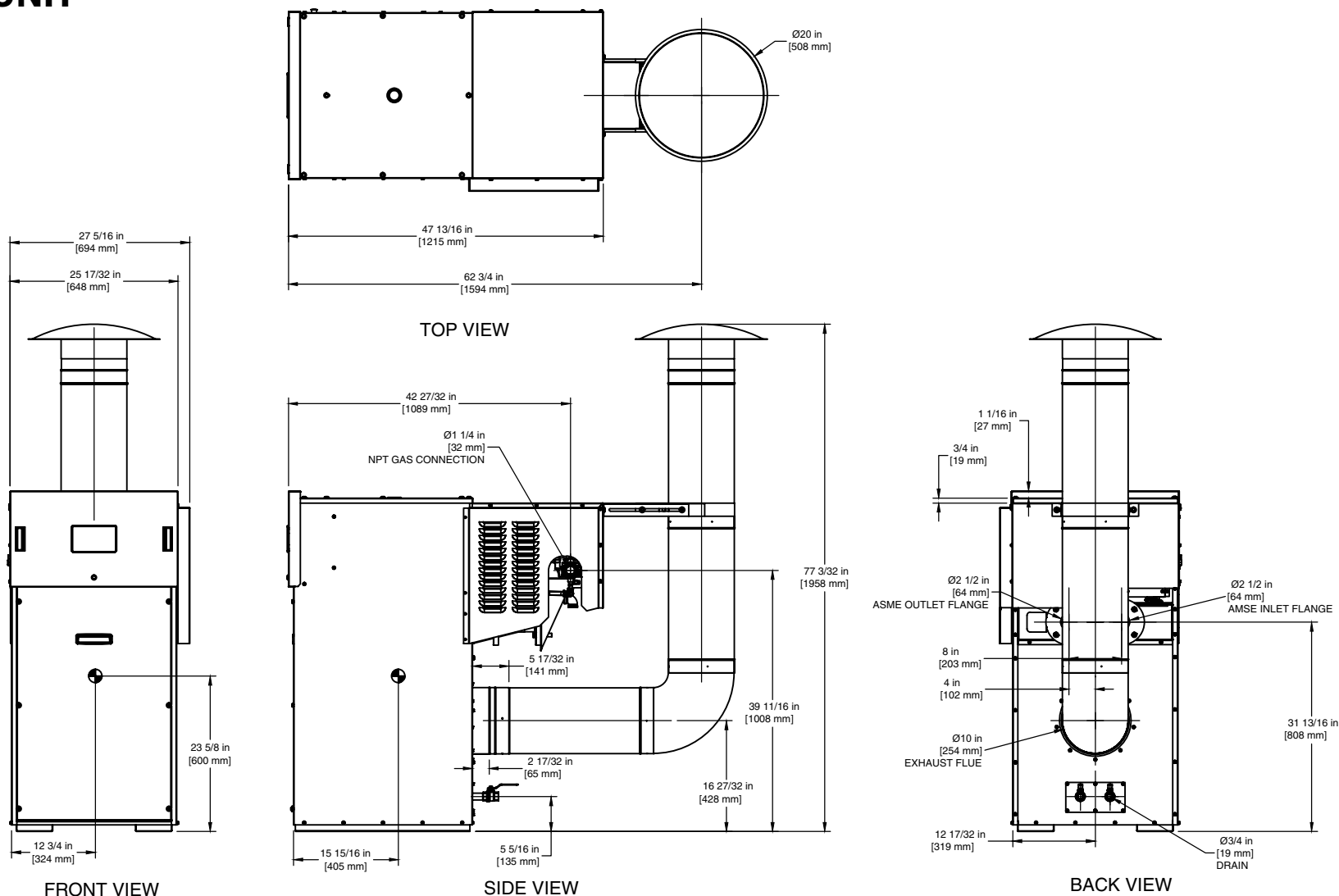
(see Installation and Operation Manual for venting information)

**RBI**® A Division of Mestek, Inc.  
Westfield, MA 01085  
(833) 265-5371

RELIABLE. BOLD. INNOVATIVE.

# OUTDOOR UNIT

RSUB-154



**Boilers & Water Heaters not available for sale in Canada due to NRCAN regulations.**

## Notes:

1. Dimensions are approximate and should not be used to "rough-in" equipment.
2. Dimensions are subject to change without notice.

**FUTERA II 1250**